

EMERGENCY PROCEDURES

Steps to be taken on board

- Take initial safety and fire fighting measures on board
- Stop commercial operations
- Disconnect hoses or loading arms
- Make the ship ready to get under way
- Ship's crew must be able to guide emergency services on board the ship.



Meteorological information - tide heights

Meteorological information available with meteo France.
Gale warning : information available at the harbour master office.

The web site www.bordeaux-port.fr provides an annual tidal tables and a map showing the tide-gauge stations.

Tide heights available on VHF : 17 (station «Bassens »).

ENVIRONMENTAL INFORMATION



Garbage disposal

Food waste facilities are available on the pier.
Harbour master gives a «certificate of ship's waste delivery» according to directive 2000/59/ec.
Other waste and residue must be disembarked by an approved company according to the port of Bordeaux ship's waste and residue plan.

ALARM

Any person discovering a fire or emergency situation must immediately raise the alarm.

Harbour master office :
VHF (channel 12)
or Phone :
+33 (0)556 315 864

Fire brigade
Phone : 18
mob : 112

Terminal
(details on berth form)



Port and terminal pollution prevention regulations

Marpol 73/78 convention must be observed.
Any pollution of port waters must be immediately reported to the harbour master's office.
Anti pollution equipment described on berth form.

MIISCELLANEAOUS INFORMATION AND REQUIREMENTS

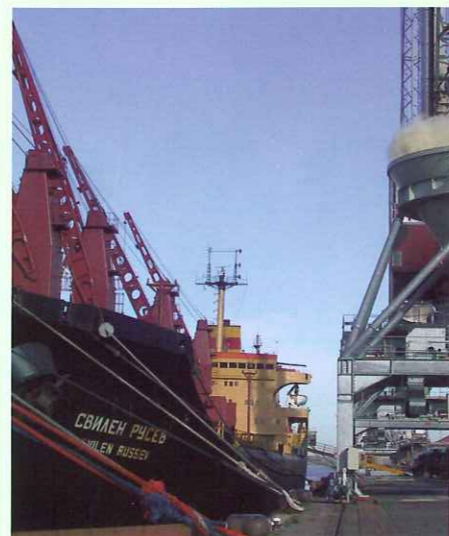


Terminal local drug and alcohol policy

Alcohol, controlled substances and weapons are prohibited.

Repairs alongside

No repairs without the permission of the harbour master's office and terminal operator. Firefighting and mooring equipment must be in working order.



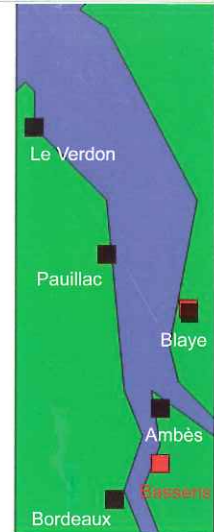
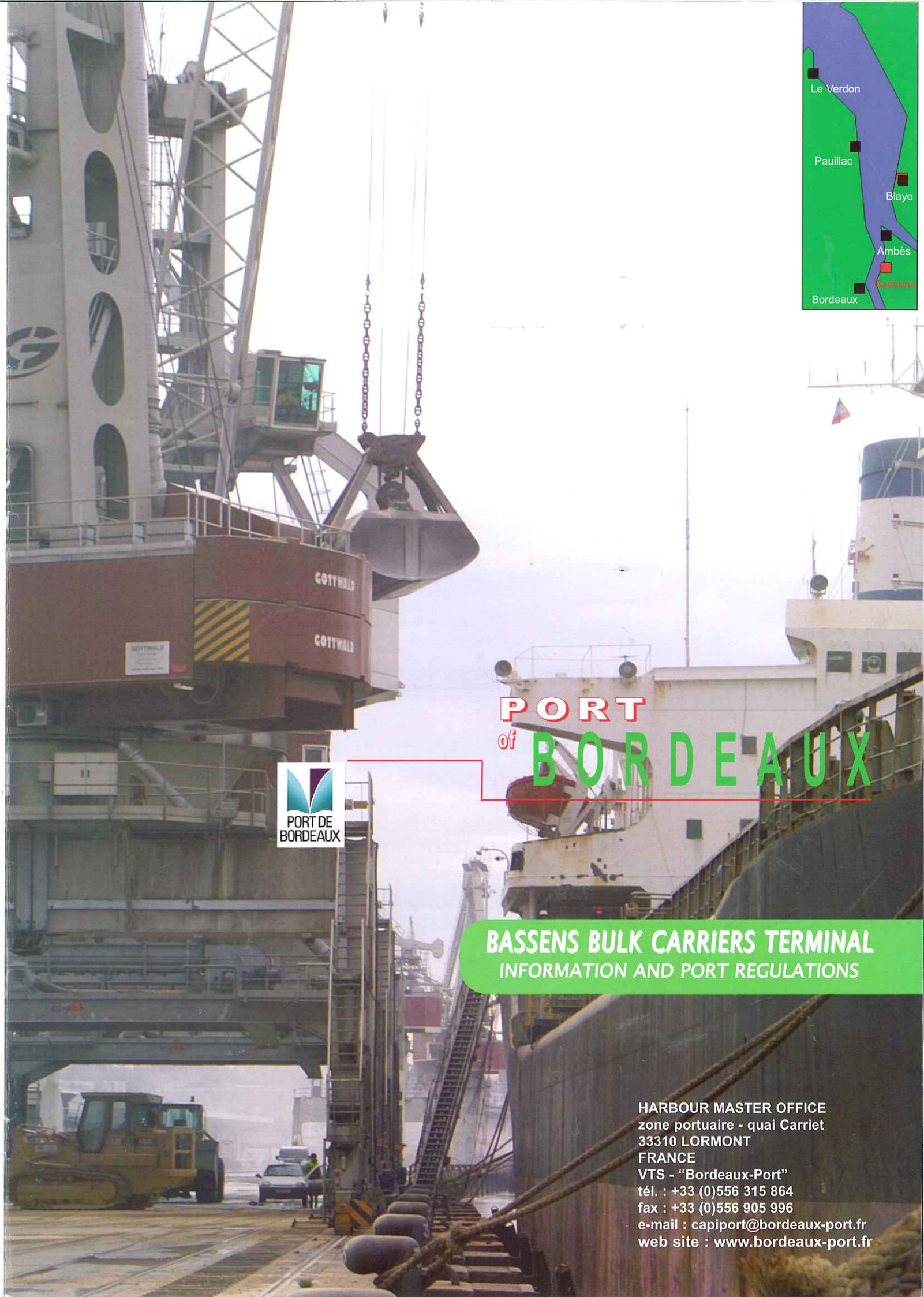
Ship stability

Ships with anormal trim or list must warn the harbour master's office.

Security information

According to the International Ship and Port Facility Security code - PFSO can be reach at any time (Harbour Master Office).

Credit photos : J.-P. Lemerque - PAB - Vertigo



PORT
of
BORDEAUX

BASSENS BULK CARRIERS TERMINAL
INFORMATION AND PORT REGULATIONS

HARBOUR MASTER OFFICE
zone portuaire - quai Carrier
33310 LORMONT
FRANCE
VTS - "Bordeaux-Port"
tél. : +33 (0)556 315 864
fax : +33 (0)556 905 996
e-mail : capiport@bordeaux-port.fr
web site : www.bordeaux-port.fr

Pre-arrival information required for the port

- Ship admittance request
- 12 hours pre-arrival message with ETA and mooring equipment state
- Dangerous goods declaration
- Ship security pre-arrival information
- Waste and residue notification
- Inward declaration

Depths and maximum vessel drafts and dimensions

Maximum drafts on the river are calculated for each tide (under keel clearance is 0.80 m and 1.00 m above sandy ground).

Ships over 215 m : take the advice of the Pilot Station for maximum draft allowed on the river
Under keel clearance alongside berth is 0.50 m.



The ship's Master's attention is particularly drawn to the following points :

- The tidal currents are strong, especially at change of ebb tide.
- The tidal range is between 2 and 5 meters.
- Sharp watch on mooring lines during the call.
- Water density : 1
- Mooring lines must be in good conditions.
- Ships must be moored using a sufficient number of mooring lines according to their deadweight (cf : berth form).

VTS-Pilot -Tugs- Boatmen

V.T.S. and radar assistance available for anchorage area and entrance chanel
Pilot is compulsory above 50 m (70 m on entrance chanel)
VHF chanel : pilot station VHF : 14
Bordeaux port VHF : 12



Tugs : 3 tugs available
Pomerol : 25 tons, 2 x 640 kw, 2 aquamasters
Moulis : 25 tons, 1700 kw, 2 fix jets
Margaux : 25 tons, 1700 kw, 2 fix jets

Access to the river for bulk carriers

Access is allowed if the berth is available.
River speed : speed must be reduced when passing berth with ship alongside (Ambes and Pauillac) or shallow water (Cussac).



Mooring arrangements and requirements

Minimum mooring lines requested by port authority is detailed on berth form. The mooring remain under the responsibility of the ship's master and he must increase the number of mooring lines if necessary.

Side alongside the berth

Big ships with heavy draft are moored portside alongside the berth.



Berth and tidal current

The tidal current in the river could set aside big ship with heavy draft from her berth (between 0 and 5 meters).

Ship/shore access arrangements and requirements

Ship or shore gangway can be used.

Operating wind limits

72 km/h

Safe operations requirements

Sufficient crew members are required on board to move the ship in case of emergency.

Communications

Working chanel with "Bordeaux Port" is vhf : 12.
Phone of harbour master office (24/24h) and operator are mentioned herewith.

Organisation and management of marine terminal ship/shore interface

Terminal operator contacts detailed on the berth form and the check list.

Unloading procedures

The relevant check list must be raised and signed before any commercial operation

The unloading plan should be prepared as requested on BLU code.

The plan must be preserved on board and at the terminal for six months.



Oil/ore carriers (OBO or O/O)

Should advise of the following information :
nature of the preceding three cargoes, date and place at which the last oil cargo was discharged, advise as to content of slop tanks wether fully inerted and sealed and date, place and name of authority that issued the last gas free certificate (isgott).

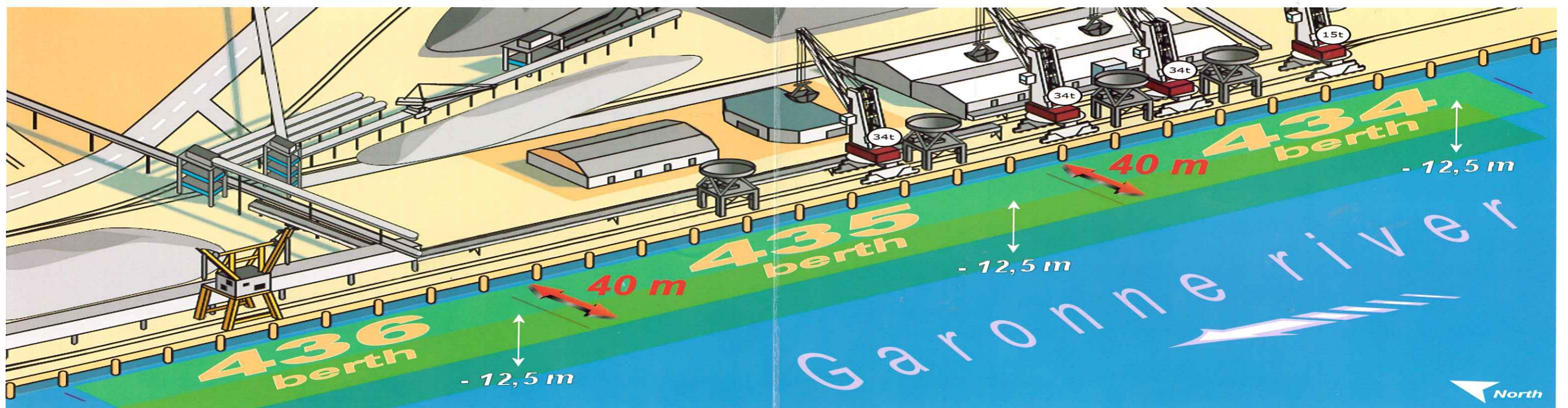


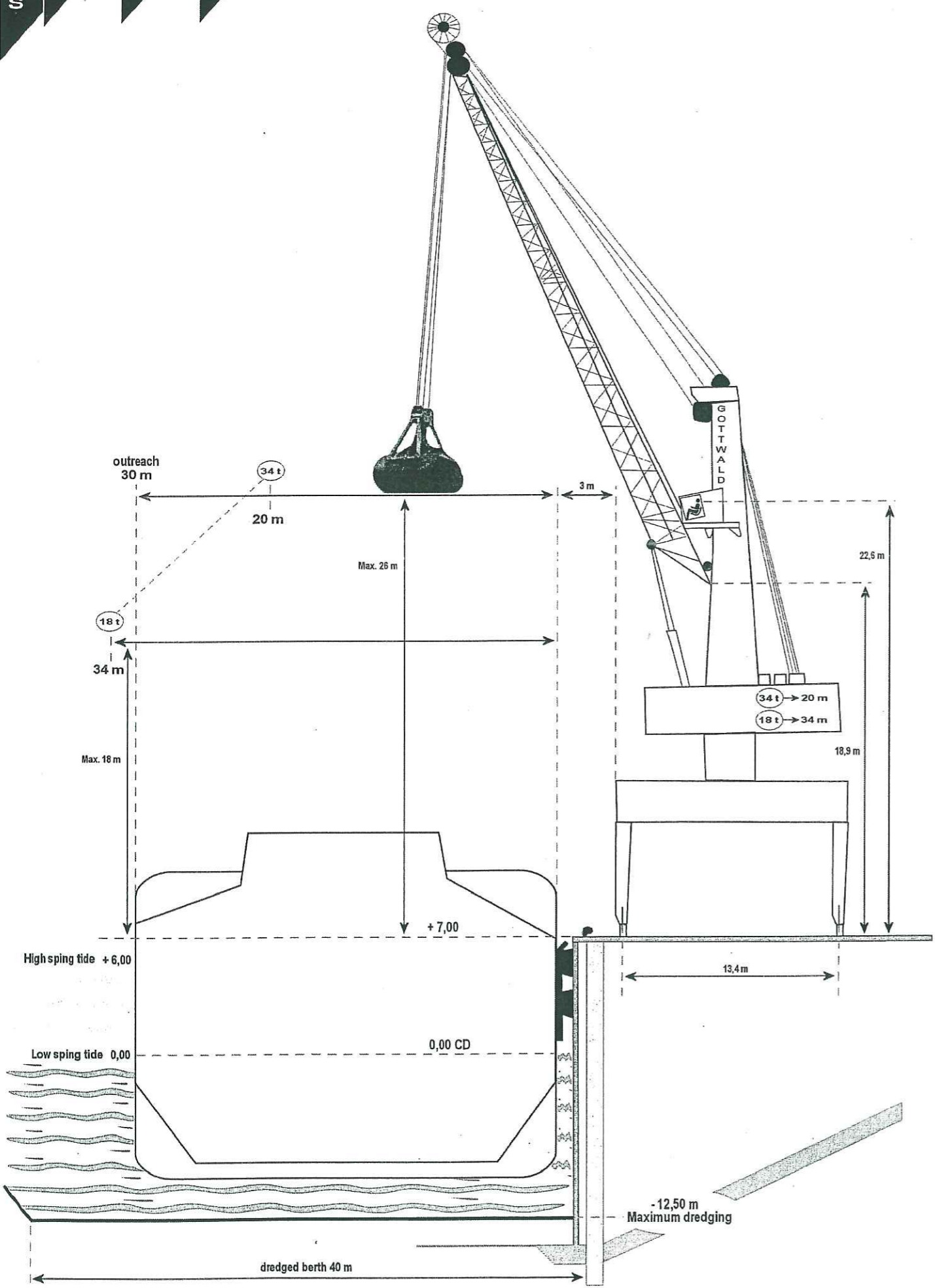
Ballast procedure

It is strictly forbidden to pump out dirty water.

Role of the competent authorities

If the competent authority is informed of disagreement between master and the terminal representative, they prevent or halt the unloading whenever they have clear indications that the safety of the ship, the crew or the harbour would be endangered thereby.





BERTH FACILITIES 434-435-436				
Estimated time of sailing from BXA buoy to berth	5 hours			
mooring bitts (every 21m)	50 t each			
Fenders (every 21m-between 2 mooring bitts) 2 x SEIBU TTV 800H 1200L	Height protected 0.5 to 7m (above C.D.) Thickness = 1.10 m Width = 0.45 m			
gangway	Ship or shore on request			
bunkering	by tanker lorry			
stores	by lorry			
Fresh water	Available on berth			
VESSEL BERTH COMPATIBILITY CRITERIA				
Maximum draft	10,50 m (11m if river conditions)			
Underkeel clearance	0.50m			
Maximum deadweight	-			
Maximum length over all (LOA)	250			
Minimum length over all (LOA)	-			
Maximum beam	-			
Maximum air draft	46.56			
High of the pier above chart datum level - CD -	7m			
Maximum allowable speed of approach to the berth	0.2 m/s			
Fenders calculated for	50.000 t			
MINIMUM MOORING PLAN REQUESTED				
	Head/stern lines	Breast line	Spring line	
L > 180 m or Draft > 10m	5	3	2	
Heavy ship	Boatmen (2) on board to assist crew for mooring			
The mooring remain under the responsibility of the ship's master and he must increased the number if necessary				
BERTH EQUIPMENT				
Crane GOTTWALD HSK 260 EG Number = 3	Hoisting strength : with a grab	34 tons		
	Below the hook	45 tons		
	Outreach at 26m above pier	0 to 30 m	away fender	
	Outreach at 18m above pier	30 to 34 m	away fender	
Conveyor belt and 2 hoppers		1000 t/h (2 cranes working a single cargo grade)		
Working hours overtime		6h-22h on request		
BERTH FIRE FIGHTING EQUIPMENT				
Fire pump berth 449 near bitt n° 63		360 m³/h at p = 8b 8 fire hydrants for 100 mm hoses		
TERMINAL CONTACTS		SEA INVEST Bordeaux		
Rank	Name	phone	mobile	Fax
Manager	Franck Humbert	00(33) 557 774 951	00(33) 611 669 178	00(33) 557 778 211
Terminal representative	Patrice Mignonet	00(33) 557 774 972	00(33) 675 322 157	00(33) 557 774 977
Forman	Erick Bocher	00(33) 557 774 954	00(33) 675 208 778	00(33) 557 774 977
Forman	Christophe Borgniet	00(33) 557 778 215	00(33) 677 033 981	00(33) 557 774 977
Forman	Jacques Delpech	00(33) 557 778 216	00(33) 670 483 848	00(33) 557 774 977
Forman	Jacques Gutierrez	00(33) 557 778 213	00(33) 607 227 925	00(33) 557 774 977
Forman	Pascal Hamoniaux	00(33) 557 778 214	00(33) 680 223 307	00(33) 557 774 977
Forman	Jean Pierre Michaux	00(33) 557 778 217	00(33) 674 355 259	00(33) 557 774 977
BALGUERIE				
Manager	J. Charles Saignol	00(33) 557 573 307	00(33) 680 645 527	00(33) 557 573 318
Terminal representative	J. Louis Latapie	00(33) 557 573 392	00(33) 614 118 841	00(33) 557 573 480
Forman	Patrick Dorignac	00(33) 556 383 590	00(33) 680 645 546	00(33) 556 061 778
Forman	Jacky Payen	00(33) 556 383 590	00(33) 673 372 611	00(33) 556 061 778